

Update the Biomark/EP1 Software

Updating the software is a two-step process. The first step removes previous versions of the applications. The second step installs the latest applications. **This process does not affect any of your instrument configurations or calibrations.**

Update the Biomark™ HD, Biomark, or EP1™ data collection and analysis software by:

- 1 Removing the previous versions of the software.
- 2 Installing the latest versions of the software.

For a full list of changes to the software, see the Biomark/EP1 Software Release Notes (101-6531).

Microsoft .Net Framework and C++ Libraries

The Fluidigm software installer performs a check of the Microsoft® .Net Framework and C++ libraries and installs any that are required.

- **If you are prompted to install the Microsoft .Net Framework and/or C++ libraries:**
Follow the instructions to install the required libraries.
NOTE The library installation can take 5 min or more.
- **If you are prompted to restart the computer:** Restart the computer and then double-click **Setup.exe** to return to the Fluidigm Software Installation window, then click the application to remove or install.

Step 1: Remove Previous Versions of the Applications

IMPORTANT If you are updating software on a non-instrument computer, do not remove the Data Collection software.


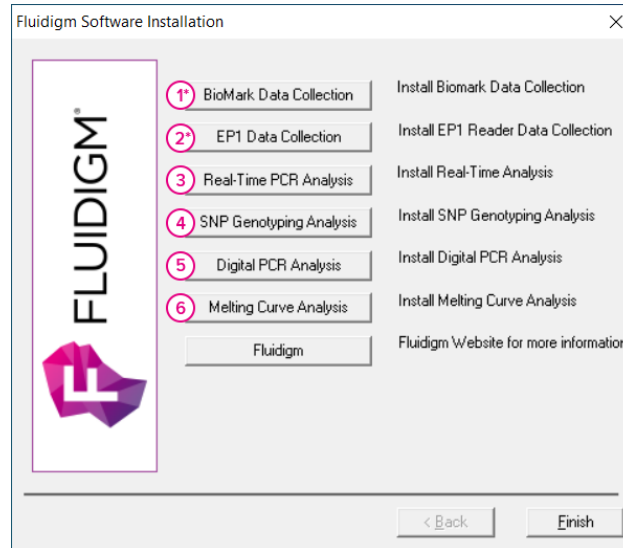
- 1 Download the software installer for the latest version of the software for Biomark HD, Biomark, and EP1, from fluidigm.com/software, then extract the installer files.
- 2 Open the folder containing the installer files, and then double-click the **Setup.exe** icon ()
- 3 In the Fluidigm Software Installation window, click the application to remove (see Table 1 on page 2).
- 4 Follow the InstallShield® Wizard prompts, click **Next**, **Remove**, and then **Finish**.
- 5 After the InstallShield Wizard closes, click the next application until all the appropriate applications are removed.

Table 1. Applications to remove, then install

Biomark applications:

- 1* Biomark Data Collection (*instrument computer only)
- 3 Real-Time PCR Analysis
- 4 SNP Genotyping Analysis
- 5 Digital PCR Analysis
- 6 Melting Curve Analysis



EP1 applications:

- 2* EP1 Data Collection (*instrument computer only)
- 4 SNP Genotyping Analysis
- 5 Digital PCR Analysis

Step 2: Install the Latest Applications

Install the same applications you removed in the previous section.

IMPORTANT If you are upgrading on a non-instrument computer, do not install the Data Collection software.

- 1 In the Fluidigm Software Installation window, click the application to install (see Table 1).
- 2 Read and accept the End User Software License Agreement terms.
- 3 Follow the InstallShield Wizard prompts, clicking **Next**, **Install**, and then **Finish**.

After the InstallShield Wizard closes, click the next application until all the appropriate applications are installed.

For technical support visit techsupport.fluidigm.com.

North America +1 650 266 6100 | Toll-free (US/CAN): 866 358 4354 | techsupport@fluidigm.com Latin America +1 650 266 6100 | techsupportlatam@fluidigm.com
Europe/Middle East/Africa/Russia +33 1 60 92 42 40 | eu.support@fluidigm.com China (excluding Hong Kong) +86 21 3255 8368 | techsupportchina@fluidigm.com
Japan +81 3 3662 2150 | techsupportjapan@fluidigm.com All other Asian countries/India/Australia +1 650 266 6100 | techsupportasia@fluidigm.com

For Research Use Only. Not for use in diagnostic procedures.

Information in this publication is subject to change without notice. Patent and license information: fluidigm.com/legal/notices. Trademarks: Fluidigm, the Fluidigm logo, Biomark, and EP1 are trademarks and/or registered trademarks of Fluidigm Corporation in the United States and/or other countries. All other trademarks are the sole property of their respective owners. © 2020 Fluidigm Corporation. All rights reserved. 11/2020