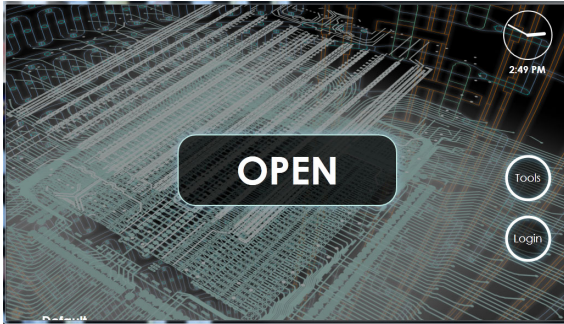


C1 System Usage

Start the Instrument

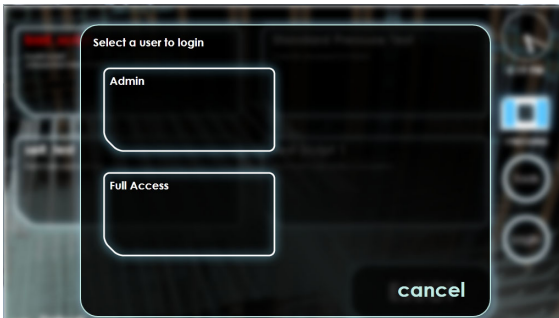
On the back of the instrument, turn the power switch ON. At power up and instrument initialization, the C1™ system home screen displays.



(Optional) Login

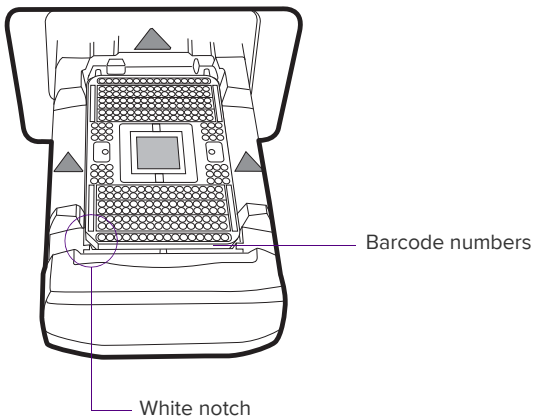
Log in as **Admin** or with a specific user account.

NOTE For information on setting passwords, see the C1 System User Guide, PN 100-4977. For more information on the Tools menu, also see the user guide.



Load an IFC

- 1 Tap **OPEN**.
- 2 Place the integrated fluidic circuit (IFC) onto the tray by aligning the notched corner to the **white notch**. In this position, barcode numbers on the IFC label face out.



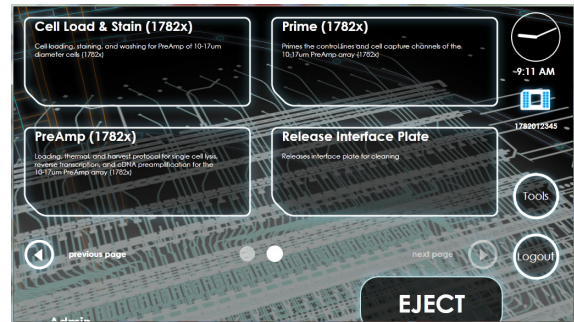
- 3 Tap **LOAD**.
- 4 C1 displays the IFC barcode at the right side of the screen. If you get a barcode error message, first check the IFC positioning and direction. You may also enter the barcode manually through the error message screen.

NOTE Contact technical support for help if problem persists.

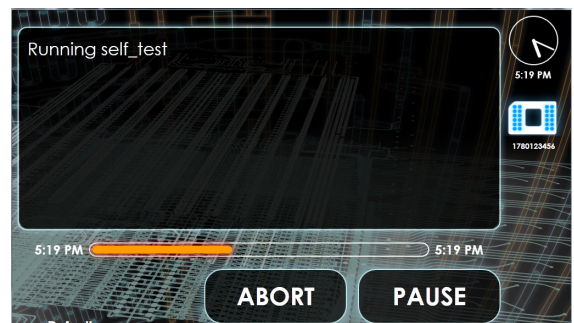
Run a Script

- 1 Select a script to run from the script selection window. (The list of available scripts is defined by the IFC barcode.)
- 2 Tap **START**.

NOTE A status screen appears with a time estimate for completion.



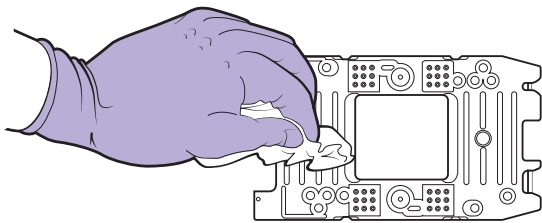
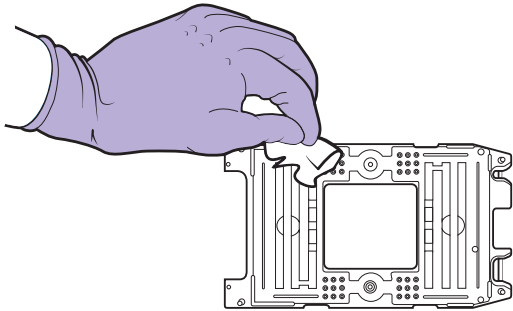
- 3 After the script is complete, as denoted on the status screen, tap **EJECT** to remove the IFC. (During an active script, **ABORT** will cancel the IFC run.)



Clean the Interface Plate

Fluidigm recommends cleaning the interface plate once a day.

- 1 Tap **OPEN**, place a used IFC into the shuttle, then tap **LOAD**.
- 2 Tap **Release Interface Plate** on the System tab, tap **START**, then **OK**.
- 3 Remove the interface plate.
- 4 Using a lint-free cloth and 70% ethanol or 70% isopropyl alcohol, gently wipe the top and bottom of the interface plate to remove any debris.



- 5 Place the cleaned interface plate onto the used IFC in the shuttle. The notch of the interface plate must align with the white notch of the shuttle tray.
- 6 Tap **LOAD**.
- 7 Run any script, wait 10–15 seconds, then tap **ABORT** to abort the run. The interface plate installs in the instrument.

For technical support visit fluidigm.com/support

EMAIL US and countries not in Europe or Asia techsupport@fluidigm.com | Europe techsupporteurope@fluidigm.com | Asia techsupportasia@fluidigm.com
PHONE In North America +1 866 FLUIDLINE (+1 866 358 4354) | Outside North America +1 650 266 6100

For Research Use Only. Not for use in diagnostic procedures.

Information in this publication is subject to change without notice. Use standard laboratory safety protocols. SDS information: fluidigm.com/sds. Patent and license information: fluidigm.com/legalnotices. EU's WEEE directive information: fluidigm.com/compliance. Fluidigm, the Fluidigm logo, and C1 are trademarks or registered trademarks of Fluidigm Corporation in the US and/or other countries. © 2014 Fluidigm Corporation. All rights reserved. 11/2014