

Anti-Ki-67 (B56)-168Er

Pathologist-Verified Clone for Imaging Mass Cytometry™

Catalog number: 3168022D

Package size and concentration: 25 µg, 0.5 mg/mL

Clone: B56

Isotype: Mouse IgG1

Pathologist-verified on: Human FFPE, Human Frozen

Fluidigm tested on: Human FFPE, Human-Frozen, Mouse FFPE

Reported reactivity: Human, Mouse, Rat, Porcine, Cross

Formulation: Antibody stabilizer with 0.05% sodium azide

Storage: Store at 4 °C. Do not freeze.

Application: IMC paraffin, IMC frozen

Technical Information

Description: Ki-67 protein, also known as MKI67, is a nuclear protein that is associated with cellular proliferation. Ki-67 protein is expressed in all cell types. It is present during active phases of the cell cycle (G1, S, G2, and mitosis) and not during the resting phase, G0. Because of this, Ki-67 is an excellent marker for determining the fraction of proliferating cells within a given population of cells.

Application: The metal-tagged antibody is designed and formulated for the application of Imaging Mass Cytometry™ (IMC™) using the Fluidigm Hyperion™ Imaging System on formalin-fixed, paraffin-embedded (FFPE) tissue sections, and frozen tissue sections.

Quality control: Each lot of conjugated antibody is quality control- tested by Imaging Mass Cytometry on tissue sections

Recommended concentration: For optimal performance it is recommended that the antibody be titrated for the desired application. Suggested initial dilution range:

IMC-Paraffin: 1: 25 to 1: 100

IMC-Frozen: 1: 50 to 1: 200

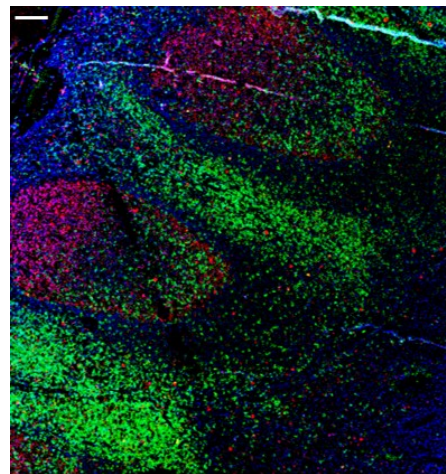
References

Chang, Q. et al. "Staining of frozen and formalin-fixed, paraffin-embedded tissues with metal-labeled antibodies for Imaging Mass Cytometry analysis." *Current Protocols in Cytometry* 82 (2017): 12.47.1–12.47.8.

Giesen, C. et al. "Highly multiplexed imaging of tumor tissues with subcellular resolution by mass cytometry." *Nature Methods* 11 (2014): 417–22.

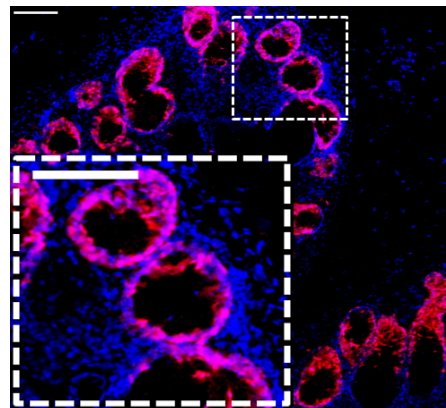
Safety

Use standard laboratory safety protocols. Read and understand the safety data sheets (SDSs) before handling chemicals. To obtain SDSs, go to fluidigm.com/sds and search for the SDS using either the product name or the part number.



Human tonsil (FFPE) stained with 168Er-anti-Ki-67 (B56) at a dilution of 1: 50 (red pseudocolor), 170Er-anti-CD3 (poly) (green pseudocolor), and iridium DNA intercalator (blue pseudocolor). Heat-mediated antigen retrieval was performed using Tris/EDTA buffer pH 9.

Scale bar size = 100 µm.



Human frozen colon stained with 168Er-anti-Ki-67 at a dilution of 1: 100 (B56) (red pseudocolor) and iridium DNA intercalator (blue pseudocolor). Tissue section was fixed in 4% paraformaldehyde for 30 minutes at 4 °C.

Scale bar size = 100 µm.

For technical support visit techsupport.fluidigm.com. | For general support visit fluidigm.com/support.

For Research Use Only. Not for use in diagnostic procedures.

Information in this publication is subject to change without notice. **Limited Use Label License:** The purchase of this Fluidigm Instrument and/or Consumable product conveys to the purchaser the limited, nontransferable right to use with only Fluidigm Consumables and/or Instruments respectively except as approved in writing by Fluidigm. **Patent and license information:** fluidigm.com/legal/notices. **Trademarks:** Fluidigm, the Fluidigm logo, Hyperion, Imaging Mass Cytometry, and IMC are trademarks and/or registered trademarks of Fluidigm Corporation in the United States and/or other countries. All other trademarks are the sole property of their respective owners. © 2020 Fluidigm Corporation. All rights reserved. May 2020