

# Anti-Human PD-L1-150Nd

## Pathologist-Verified Clone for Imaging Mass Cytometry™

Catalog: 3150031D

Package size and concentration: 25 µg, 0.5 mg/mL

Storage: Store at 4 °C. Do not freeze.

Reactivity: Human

Clone: E1L3N

Isotype: Rabbit IgG

Formulation: Antibody stabilizer with 0.05% sodium azide

Application: IMC-Paraffin

## Technical Information

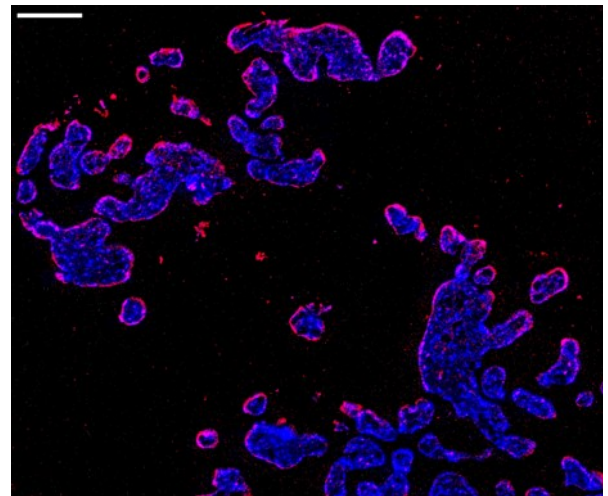
**Application:** The metal-tagged antibody is designed and formulated for the application of Imaging Mass Cytometry (IMC™) using the Fluidigm Hyperion™ Imaging System on formalin-fixed, paraffin-embedded (FFPE) tissue sections.

**Quality control:** Each lot of conjugated antibody is quality control-tested by Imaging Mass Cytometry on tissue sections.

**Recommended concentration:** For optimal performance it is recommended that the antibody be titrated for the desired application. Suggested initial dilution range:  
 IMC-Paraffin: 1:25 to 1:100

## Description

PD-L1 (also known as CD274 and B7-H1), one of the ligands for programmed death 1 (PD-1), is an immune-inhibitory receptor belonging to the CD28/cytotoxic T lymphocyte-associated antigen 4 (CTLA-4) family. It can deliver an inhibitory signal to T cells expressing PD-1/B7-1, resulting in immune suppressive effects. PD-L1 is expressed on activated T cells, B cells, NK cells, DCs, macrophages, and bone marrow-derived mast cells. PD-L1 expression is also found on a wide range of human tumors. In addition, studies have shown that PD-L1 expression strongly correlates with unfavorable prognosis in kidney, ovarian, bladder, breast, liver, gastric, and pancreatic cancer, but not in non-small cell lung cancer (NSCLC). Most important, these studies reveal that higher expression of PD-L1 may facilitate advancement of tumor stage and increase the invasion potential. PD-L1 expression can be induced by many inflammatory mediators and cytokines, of which interferon-γ (IFN-γ) is the most potent.



Human placenta (FFPE) stained with 150Nd-anti-PD-L1 (E1L3N®) at a dilution of 1:50 (red pseudocolor) and iridium DNA intercalator (blue pseudocolor). Heat-mediated antigen retrieval was performed using Tris/EDTA buffer pH 9. Scale bar size = 100 µm.

## References

Chang, Q. et al. "Staining of frozen and formalin-fixed, paraffin-embedded tissues with metal-labeled antibodies for imaging mass cytometry analysis." *Current Protocols in Cytometry* 82 (2017): 12.47.1–12.47.8.

Giesen, C. et al. "Highly multiplexed imaging of tumor tissues with subcellular resolution by mass cytometry." *Nature Methods* 11 (2014): 417–22.

For technical support visit <http://techsupport.fluidigm.com>. | For general support visit [www.fluidigm.com/support](http://www.fluidigm.com/support).

### For Research Use Only. Not for use in diagnostic procedures.

This product contains antibodies manufactured by and sold under license from CST™ and licensees thereof. Information in this publication is subject to change without notice. **Safety data sheet information:** [www.fluidigm.com/sds](http://www.fluidigm.com/sds). **Patent and license information:** [www.fluidigm.com/legalnotices](http://www.fluidigm.com/legalnotices). **Limited Use Label License:** The purchase of this product conveys to the purchaser the limited, non-transferable right to use the purchased consumable or reagent only with Fluidigm Instruments and Systems. **EU's WEEE directive information:** [www.fluidigm.com/compliance](http://www.fluidigm.com/compliance). Fluidigm, the Fluidigm logo, Hyperion, Imaging Mass Cytometry, and IMC are trademarks or registered trademarks of Fluidigm Corporation in the United States and/or other countries. All other trademarks are the sole property of their respective owners. © 2017 Fluidigm Corporation. All rights reserved. 10/2017