

Anti-BCL-2 (EPR17509)-146Nd

Pathologist-Verified Clone for Imaging Mass Cytometry™

Catalog number: 3146019D

Package size and concentration: 25 µg, 0.5 mg/mL

Clone: EPR17509

Isotype: Rabbit IgG

Pathologist-verified on: Human FFPE

Fluidigm tested on: Human FFPE, Mouse FFPE

Reported reactivity: Human, Mouse

Formulation: Antibody stabilizer with 0.05% sodium azide

Storage: Store at 4 °C. Do not freeze.

Application: IMC paraffin

Technical Information

Description: The BCL-2 family proteins are key regulators of apoptosis and autophagy. The founding member BCL-2, which possesses four conserved BCL-2 homology domains (BH1-4), suppresses apoptosis through its interaction with and sequestration of pro-apoptotic proteins, such as Bax and Bak. Bax and Bak can oligomerize into proteolipid pores and permeabilize the outer mitochondrial membrane, resulting in the release of cytochrome c and other intermembrane factors into the cytosol to initiate downstream apoptotic events. The ratio between the anti-apoptotic and pro-apoptotic BCL-2 family members determines the sensitivity to apoptotic stimuli.

Application: The metal-tagged antibody is designed and formulated for the application of Imaging Mass Cytometry™ (IMC™) using the Fluidigm Hyperion™ Imaging System on formalin-fixed, paraffin-embedded (FFPE) tissue sections.

Quality control: Each lot of conjugated antibody is quality control- tested by Imaging Mass Cytometry on tissue sections

Recommended concentration: For optimal performance it is recommended that the antibody be titrated for the desired application. Suggested initial dilution range: IMC-Paraffin: 1:50 to 1:200

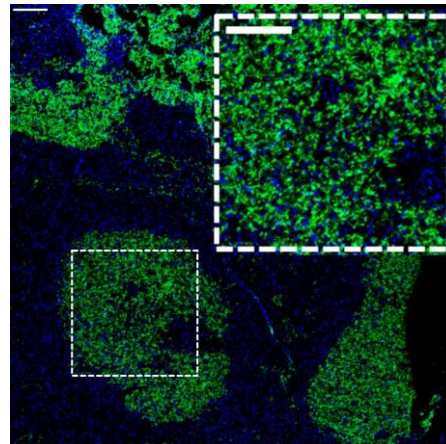
References

Chang, Q. et al. "Staining of frozen and formalin-fixed, paraffin-embedded tissues with metal-labeled antibodies for Imaging Mass Cytometry analysis." *Current Protocols in Cytometry* 82 (2017): 12.47.1–12.47.8.

Giesen, C. et al. "Highly multiplexed imaging of tumor tissues with subcellular resolution by mass cytometry." *Nature Methods* 11 (2014): 417–22.

Safety

Use standard laboratory safety protocols. Read and understand the safety data sheets (SDSs) before handling chemicals. To obtain SDSs, go to fluidigm.com/sds and search for the SDS using either the product name or the part number.



Human follicular lymphoma (FFPE) stained with 146Nd-anti-BCL-2 (EPR17509) at a dilution of 1:100 (green pseudocolor) and 176Yb-anti-histone 3 (blue pseudocolor). Heat-mediated antigen retrieval was performed using Tris/EDTA buffer pH 9. Scale bar size = 100 µm.

For technical support visit techsupport.fluidigm.com. | For general support visit fluidigm.com/support.

For Research Use Only. Not for use in diagnostic procedures.

Information in this publication is subject to change without notice. **Limited Use Label License:** The purchase of this Fluidigm Instrument and/or Consumable product conveys to the purchaser the limited, nontransferable right to use with only Fluidigm Consumables and/or Instruments respectively except as approved in writing by Fluidigm. **Patent and license information:** fluidigm.com/legal/notices. **Trademarks:** Fluidigm, the Fluidigm logo, Hyperion, Imaging Mass Cytometry, and IMC are trademarks and/or registered trademarks of Fluidigm Corporation in the United States and/or other countries. All other trademarks are the sole property of their respective owners. © 2020 Fluidigm Corporation. All rights reserved. 24-Apr-2020