

Anti-Human CyclinB1-164Dy

Catalog #: 3164010A

Package Size: 50 tests

Storage: Store product at 4°C. Do not freeze.

Cross Reactivity: Mouse, Human, Hamster

Clone: GNS-1

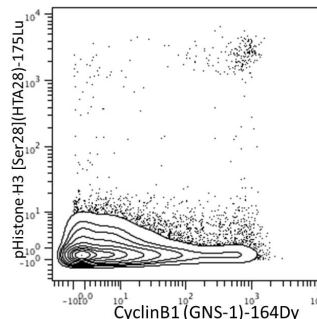
Isotype: Mouse IgG1

Formulation: Antibody stabilizer with 0.05% Sodium Azide

Technical Information

Validation: Each lot of conjugated antibody is quality control tested by CyTOF® analysis of stained cells using the appropriate positive and negative cell staining and/or activation controls.

Recommended Usage: The suggested use is 1 µl for up to 3 X 10⁶ live cells in 100 µl. It is recommended that the antibody be titrated for optimal performance for each of the desired applications.



Human Jurkat T cells were fixed, permeabilized, and stained with 175Lu-anti-pHistone H3 [Ser28](HTA28) and 164Dy-anti-CyclinB1 (GNS-1).

Description

Cyclin B1 is one of the key regulators of the cell cycle, regulating the transition from G2 to M phase in complex with the cyclin-dependent protein kinase cdc2. Cyclin B1 expression initiates during S-phase, peaks at G2/M phase, and at the end of mitosis cyclin B1 is rapidly degraded. Cyclin B1 is needed for cells to enter mitosis, and therefore essential for growth of all cells, including tumor cells. In normal cells, cyclin B1 is expressed at almost undetectable levels; however, many tumors express high constitutive levels of cyclin B1, which causes uncontrolled tumor growth. This overexpression has been observed in several human solid tumors, for example, breast cancer (BC), malignant melanoma (MM), and renal cell carcinoma (RCC), as well as some hematological cancers. This antibody has been reported to react with hamster and mouse cyclin B1. In addition, the GNS-1 clone has been reported to recognize an epitope between amino acids 1-21 of human cyclin B1.

References

Bandura, D. R., et al. Mass Cytometry: Technique for Real Time Single Cell Multitarget Immunoassay Based on Inductively Coupled Plasma Time-of-Flight Mass Spectrometry. *Analytical Chemistry* 81:6813-6822, 2009.

Behbehani, G.K., et al. Single-cell mass cytometry adapted to measurements of the cell cycle. *Cytometry A* 81 (7): 552-566, 2012.

Ornatsky, O. I., et al. Highly multiparametric analysis by mass cytometry. *J Immunol Methods* 361 (1-2):1-20, 2010.

Contact Information:

Sales: sales@DVSsciences.com | Support: support@DVSsciences.com
www.DVSsciences.com | For assistance by phone: 855-DVS-CYTO

This product is intended for Research Use Only. This product is not intended for therapeutic or diagnostic purposes in humans or animals.

© 2011 DVS Sciences Inc. The trademarks mentioned herein are the property of DVS Sciences Inc. or their respective owners. DVS Sciences Inc. products are warranted to meet stated product specifications and to conform to label descriptions when used and stored properly. Unless otherwise stated, this warranty is limited to 6 months from date of sales for products used, handled and stored according to DVS Sciences, Inc. instructions. DVS Sciences, Inc. sole liability for the product is limited to replacement of the product or refund of the purchase price. Product may not be resold, modified for resale or used to manufacture commercial products without prior written approval from DVS Sciences Inc.

